

CASE STUDY:

COMFORT INN AND MEDICAL OFFICE

PROJECT OVERVIEW

PROPERTY TYPE:

Multi-Tenant Office

INSTALLED MEASURES:

Building Envelope, HVAC Replacement, LED Lighting



\$1,400,000

Approved PACE Financing



20 Years

Term



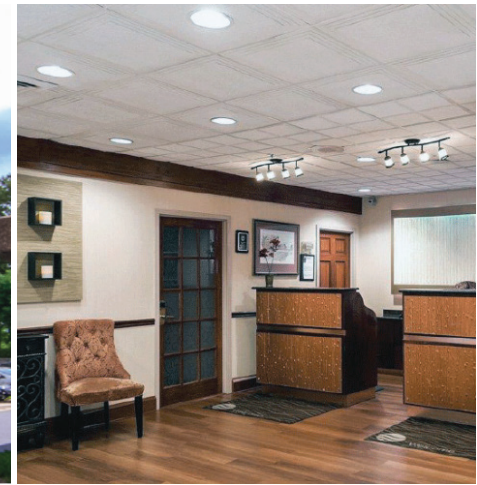
Greenworks Lending

Lender



Recurrent

Project Partner



THE CHALLENGE:

The commercial office building and Comfort Inn hotel, located on a single parcel in Gaithersburg, MD, saw the need to implement cost saving energy efficiency upgrades.

THE SOLUTION:

The hotel and medical office worked with MD-PACE to integrate \$1,400,000 of C-PACE financing into the \$1,400,400 multi-tenant office project. The office saved \$134,444 in the first year, and is expected to save \$3,174,510 in lifetime savings. The Comfort Inn hotel received Choice Hotel's highest level certification for sustainability, following the improvements.



MID-ATLANTIC
PACE
ALLIANCE

pacealliance.org



To learn more about
Montgomery County PACE:
info@paceservicing.com

ABOUT MONTGOMERY COUNTY PACE

Montgomery County PACE is a Department of Environmental Protection C-PACE program administered by PACE Financial Servicing. C-PACE authorizes property owners to make energy efficiency and renewable energy upgrades to commercial buildings using innovative financing.